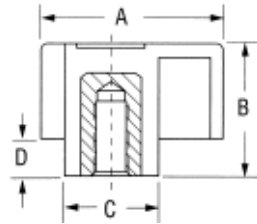


Plastic Hand Knobs

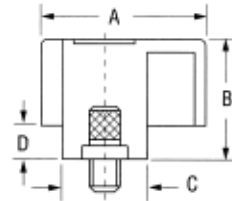
- ▶ Glass filled nylon
- ▶ Brass insert
- ▶ Three arm design



PART #	Thread	Depth	A	B	C	D
HK-8101	#8-32	3/8	1-5/32	3/4	1/2	1/4
HK-8102	#10-32	3/8	1-5/32	3/4	1/2	1/4
HK-8103	1/4-20	1/2	1-5/32	3/4	1/2	1/4
HK-8104	5/16-18	1/2	1-5/32	3/4	1/2	1/4

Plastic Hand Knobs with stud

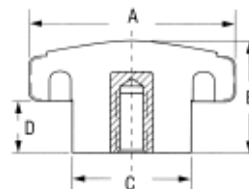
- ▶ Glass filled nylon
- ▶ Steel, zinc plated stud
- ▶ Three arm design



PART #	Thread	Thread Length	A	B	C	D
HK-8121	#8-32	3/8	1-5/32	3/4	1/2	1/4
HK-8122	#10-32	3/8	1-5/32	3/4	1/2	1/4
HK-8123	1/4-20	1/2	1-5/32	3/4	1/2	1/4
HK-8124	1/4-20	3/4	1-5/32	3/4	1/2	1/4
HK-8125	1/4-20	1	1-5/32	3/4	1/2	1/4
HK-8126	5/16-18	5/8	1-5/32	3/4	1/2	1/4
HK-8127	5/16-18	1	1-5/32	3/4	1/2	1/4

Plastic Hand Knobs

- ▶ Phenolic hand knob
- ▶ Brass insert
- ▶ Knurled rim



PART #	X Thread	Depth	A	B	C	D
HK-6032	#10-32	5/16	1	1/2	5/8	1/8
HK-6125	1/4-20	3/8	1	3/4	5/8	1/8
HK-6131	5/16-18	1/2	1-1/4	3/4	3/4	17/64
HK-6137	3/8-16	1/2	1-1/4	3/4	3/4	17/64